



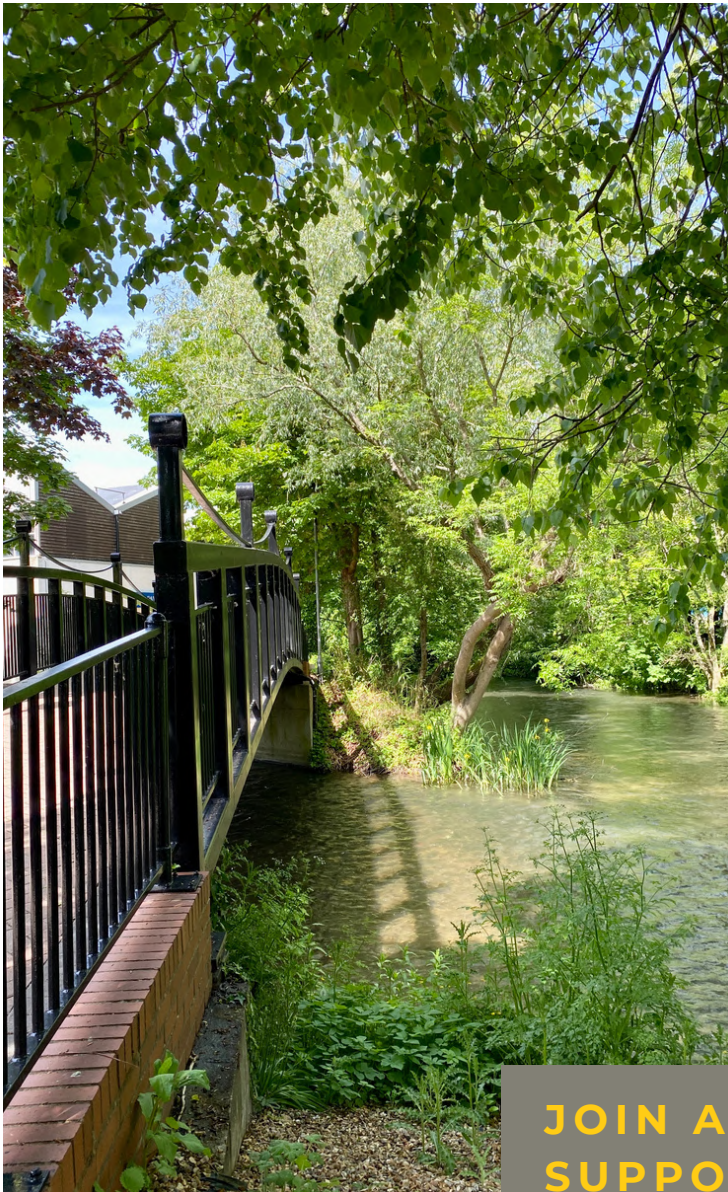
# INCUBIVE WILTON

---

**THE GUILD WILTSHIRE  
KING STREET  
WILTON  
SALISBURY  
SP2 0BH**



## ABOUT INCUIHIVE WILTON



IncuHive Wilton is an exciting location situated in the historic courtyard at The Guild, in the centre of Wilton. It provides a range of virtual office, membership, desk space rental, office and meeting room options with a simple 1-month contract for rental. This, combined with 24-hour access and high-speed Internet, make it the perfect location for new or growing businesses.

A range of mentoring and business support services are also available at no extra charge for our members.

The collaborative community IncuHive creates means you can often find everything you need in-house, bounce ideas around, solve problems and find new clients all within the space. Our aim is not just to fill rooms with tenants, but to create a diverse and innovative business community. This is the real benefit from working in IncuHive; the buzz and excitement of the people around you. As is often said, it's not what you know, it's who you know, and we attract a mix of people who will really help push your business to the next level.

We look forward to welcoming you!

**JOIN A LIKE-MINDED  
SUPPORTIVE COMMUNITY OF  
BUSINESS PEOPLE!**



**VIRTUAL OFFICE  
POST BOX  
SERVICES**



**INCUHIVE  
MEMBERSHIP  
HOT DESKING  
SPACE**



**DEDICATED DESK  
RENTAL SPACE**



**DEDICATED  
PRIVATE OFFICE  
SPACE**



**MEETING &  
TRAINING ROOM  
SPACE HIRE**



**ONSITE  
BREAK-OUT  
COMMUNAL SPACES**



**ONSITE  
PARKING**



**BUSINESS  
MENTORING &  
SUPPORT**

# CO-WORKING SPACE



## VIRTUAL OFFICE

Register your business address at this location and receive mail to a serviced post box

**£30 PCM\***



## INCUBIVE MEMBERSHIP

Access to the Ad-hoc co-working area & business mentoring and support services

**£49 PCM\***



## DEDICATED DESK

A dedicated desk in our co-working space. Utilities and access to support included

**£120 PCM\***



## FLEXIBLE OFFICE SPACE

Your own private office. Utilities and access to support included. Starting from...

**£250 PCM\***

\*All prices are subject to VAT. Prices include utilities, WiFi & post handling. There is an additional charge for meeting space.



IncuHive Wilton has 18 individual offices from 56 sq ft to 560 sq ft. All our offices are inclusive of utilities, Wi-Fi and post handling. Each office has one parking space and 24-hour access, seven days a week. The offices may benefit from small business rates relief.

We operate one month rolling contracts and the offices are unfurnished.

Office	Sq ft	Number of desks	Price (pcm)*
7:001	250	7	£695
7:101	266	7-8	£725
7:102	157	4-5	£495
7:103	56	2	£195
7:104	148	4	£475
7:105	224	6-7	£625
7:106	100	3	£325
8:002	186	5	£595
8:003	142	4	£425

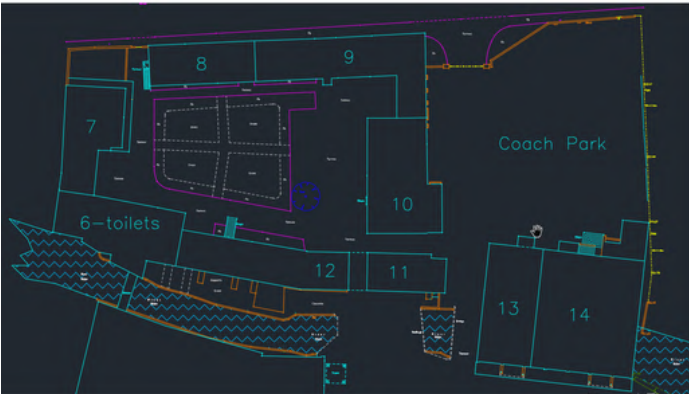
Office	Sq ft	Number of desks	Price (pcm)*
9:001	182	5	£525
10:001	500	14	£1,395
10:002	560	16	£1,495
13:101	532	14-15	£1,495
13:102	245	7	£695
13:103	232	6-7	£650
13:104	248	7	£675
13:105	254	6-7	£695
13:106	110	3	£350

\*All prices are subject to VAT. Prices include utilities, WiFi & post handling. There is an additional charge for meeting space.



Building layout

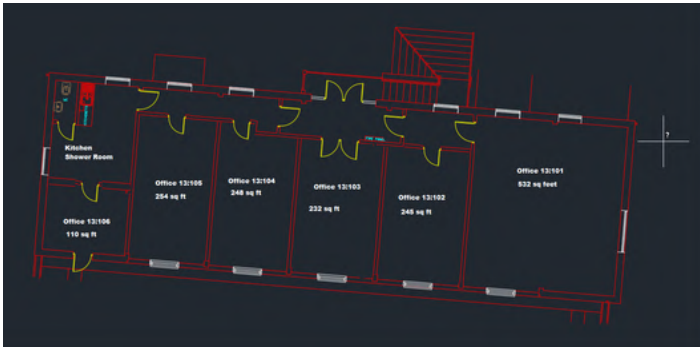
Floor plan - Building 8, 9, 10



Building 7 Ground Floor



Building 7 First Floor



Floor plan - Building 7

Floor plan - Building 13



# BUSINESS SUPPORT & MENTORING

Being an IncuHive member is about so much more than just renting space or escaping from the dining room table. We want you to feel part of a community and are happy to help you in any way that we can.

Between members of staff and existing members, we have an enormous amount of combined experience and extensive networks. If we work together, we can use this to mutual benefit. To this end, our Chief Start-Up Officer Andy Pringle will act as the conduit and would love to learn more about your business, how you may be able to help other members, how they can help you, and what additional support we can offer as well.

## About Andy



**Andy Pringle - Chief Start-Up Officer**

**Slack: Andy Pringle**

**Phone: 07817 065694**

**Email: [andy.pringle@incuhive.co.uk](mailto:andy.pringle@incuhive.co.uk)**

Having come from a military family, Andy realised at an early age that he did not fit into that regimented (excuse the pun) world and an early experience at school confirmed this. In an attempt to meet local girls, he and a friend organised a disco (shows his age). This was very successful (on every level!) and showed that it is possible to make money doing something that you love.

Since then, he has run some very profitable businesses and some that are best forgotten. In every case, lessons were learned and of these one of the greatest was the incredible power of collaboration. Let's harness that power now to help each other.

To arrange an initial chat to see how we may be able to support you, please contact Andy via Slack, email ([andy.pringle@incuhive.co.uk](mailto:andy.pringle@incuhive.co.uk)) or phone him on 07817 065694



We do regular edits on our members, which have proved insanely popular, as it not only helps build your brand/business awareness, but has also helped our members in generating new leads and revenue!

*"I didn't expect sharing my services on IncuHive's social media accounts could be this beneficial.*

*Thank you very much!"*

**Sally from Lomi Lomi Winchester**



**One reason why you should feature your business on IncuHive platforms...**

Sally, who is a member at our Hursley site, was approached by a new client following our social media feature!

If you would like to be featured as well, do get in touch today.

**Eszter Miskolczy - Marketing Manager**

**Phone: 07907 434348**

**Email: [hello@incuhive.co.uk](mailto:hello@incuhive.co.uk)**





# FOLLOW US ON SOCIAL MEDIA

Find out about the latest updates and upcoming events on IncuHive socials @the\_incuhive\_space! We post behind the scenes photos, interviews, business tips and so much more. Follow us to learn more about the fun world of IncuHive!

 @the\_incuhive\_space

 IncuHive : Business Incubation, Investment & Collaboration

 @IncuHiveUK

 IncuHive - Business Incubation, Investment & Collaboration

 @the\_incuhive\_space



# CONTACT US

If you have any additional questions or queries about IncuHive Wilton or the wider IncuHive Group offerings, please don't hesitate to contact the team using the details below. Our lines are always open, and we hope we can help you on your business journey.



**Amie Padfield - Customer Relations Manager**

**Phone: 07808 286060**

**Email: [amie.padfield@incuhive.co.uk](mailto:amie.padfield@incuhive.co.uk)**

**Web: [www.incuhive.co.uk](http://www.incuhive.co.uk)**

## FIND US

**The Guild Wiltshire  
King Street  
Wilton  
Salisbury  
SP2 0BH**

